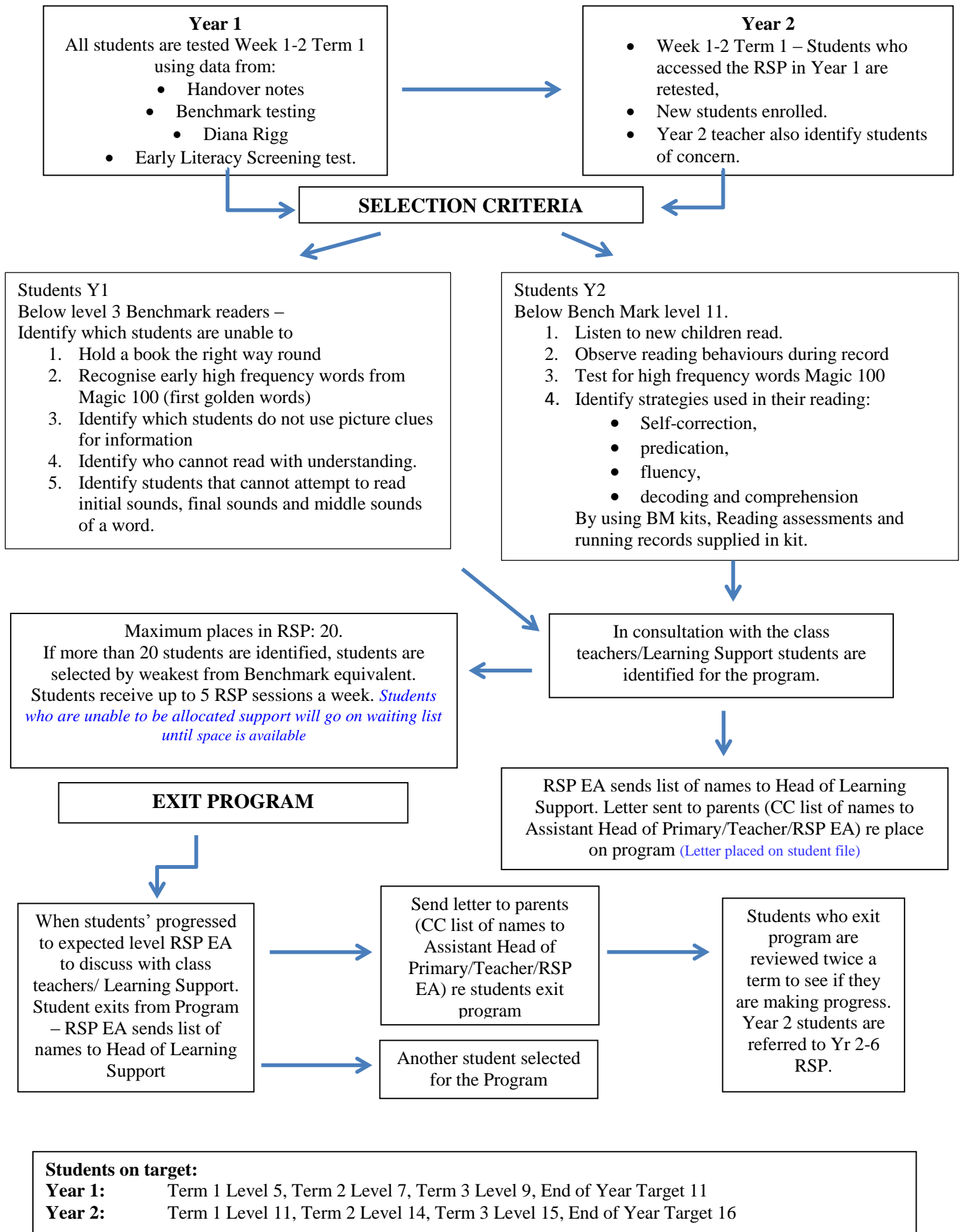


Reading Support Program (RSP) Years 1 - 2



Reading Support Program (RSP) Years 2 - 6

SELECTION CRITERIA

RSP EA sends a copy of students who previously accessed program and their reading level to teachers. Teacher review this information and identify students they wish to be assessed for RSP. Teacher puts forward a list of students to be assessed.

Week 1-2 term RSP EA test students using Literacy Screening test. Star Reading Test (Years 4, 5, 6) or PM Benchmark (Year 2, 3)

RSP EA Cross checks results from tests with PAT/ NEALEs Tests, and rank students

Student selected for program if two or more years behind chronological age. Students ranked by those furthest behind C.A.

In collaboration with teachers RSP EA discuss list of students who will access program. *(Number and frequency of sessions will depend on volunteers/EAs available)*

RSP EA Consults Learning Support Department to discuss needs in regards to funded students and application of resources.

RSP EA assign students to lists according to EA timetables and parent volunteers in correlation with Learning Support. Final list of students created. *Students who are unable to be allocated support will go on waiting list until space is available*

RSP EA sends list of names to Head of Learning Support. Letter sent to parents (CC list of names to Assistant Head of Primary/JS/Teacher/RSP EA) re: place in program *(Letter placed on student file)*

EXIT PROGRAM

When students' progress to within 12 months of chronological reading age (expected level) RSP EA discuss with class teachers/ Enrichment. Student exits from Program – RSP EA sends list of names to Head of Learning Support

Send letter to parents (CC list of names to Assistant Head of Primary/Teacher/RSP EA) re: students exiting program *(Letter placed on student file)*

Students who exit program are reviewed twice a term to see if they are making progress.

Another student selected for the Program